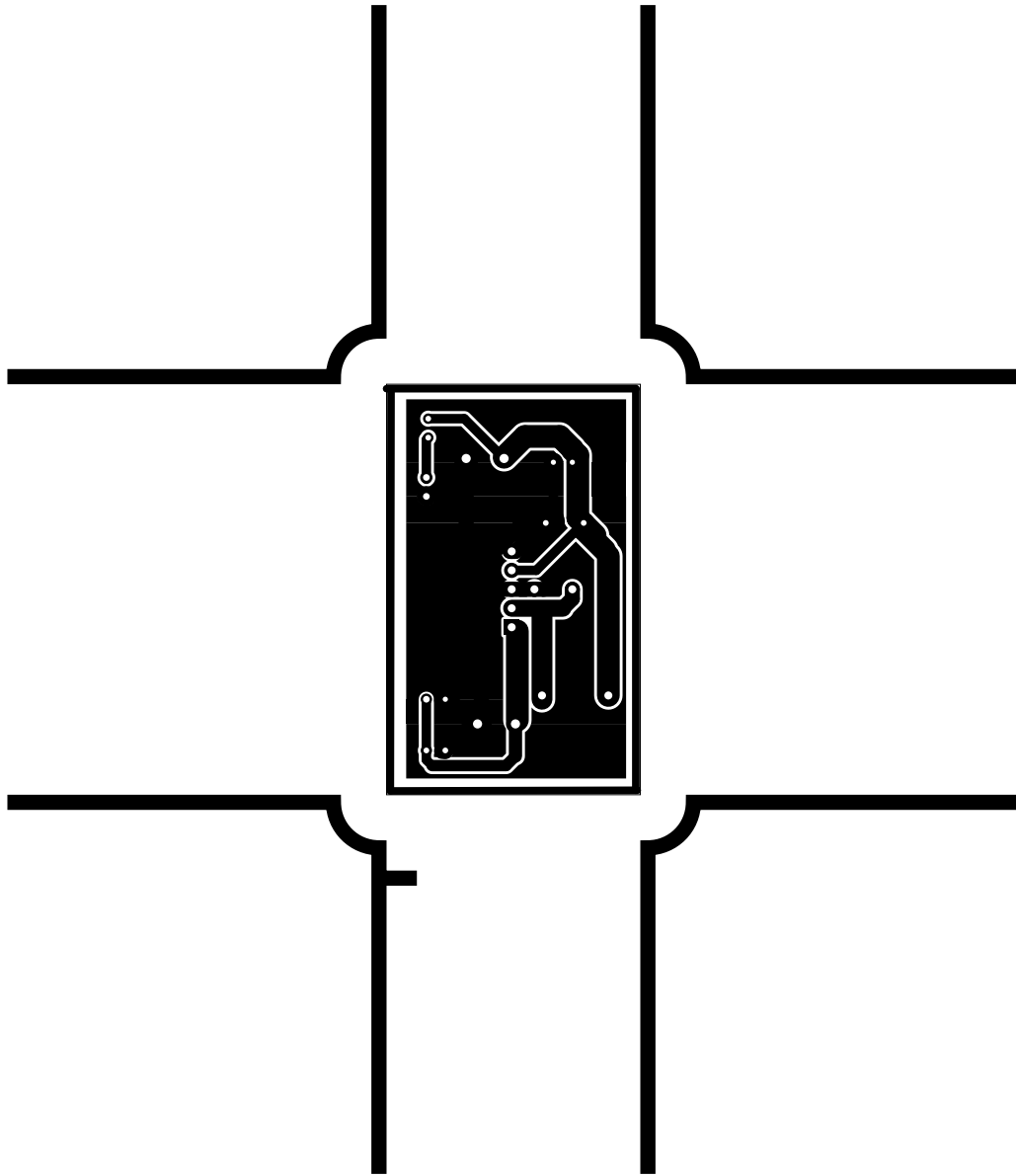
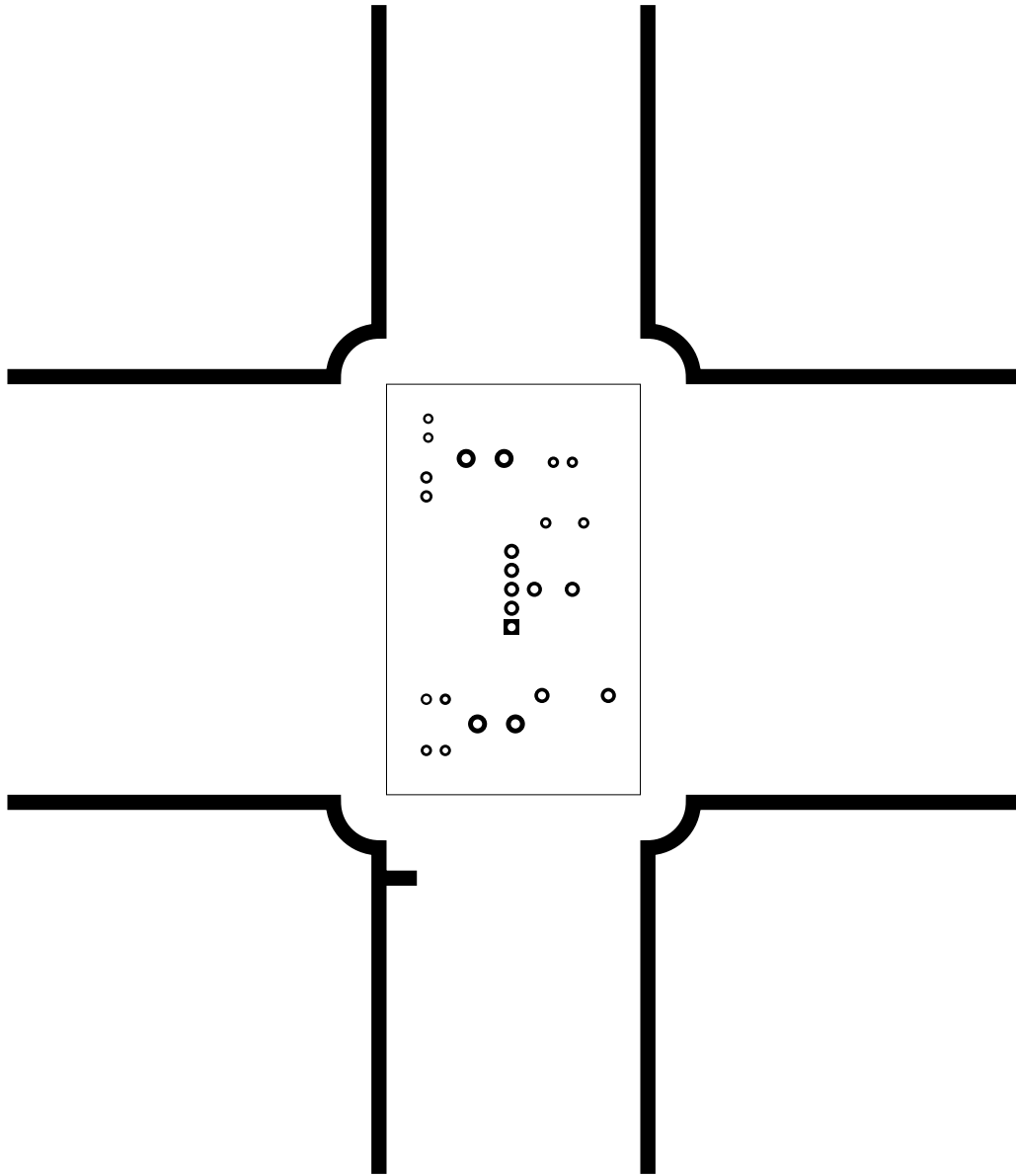
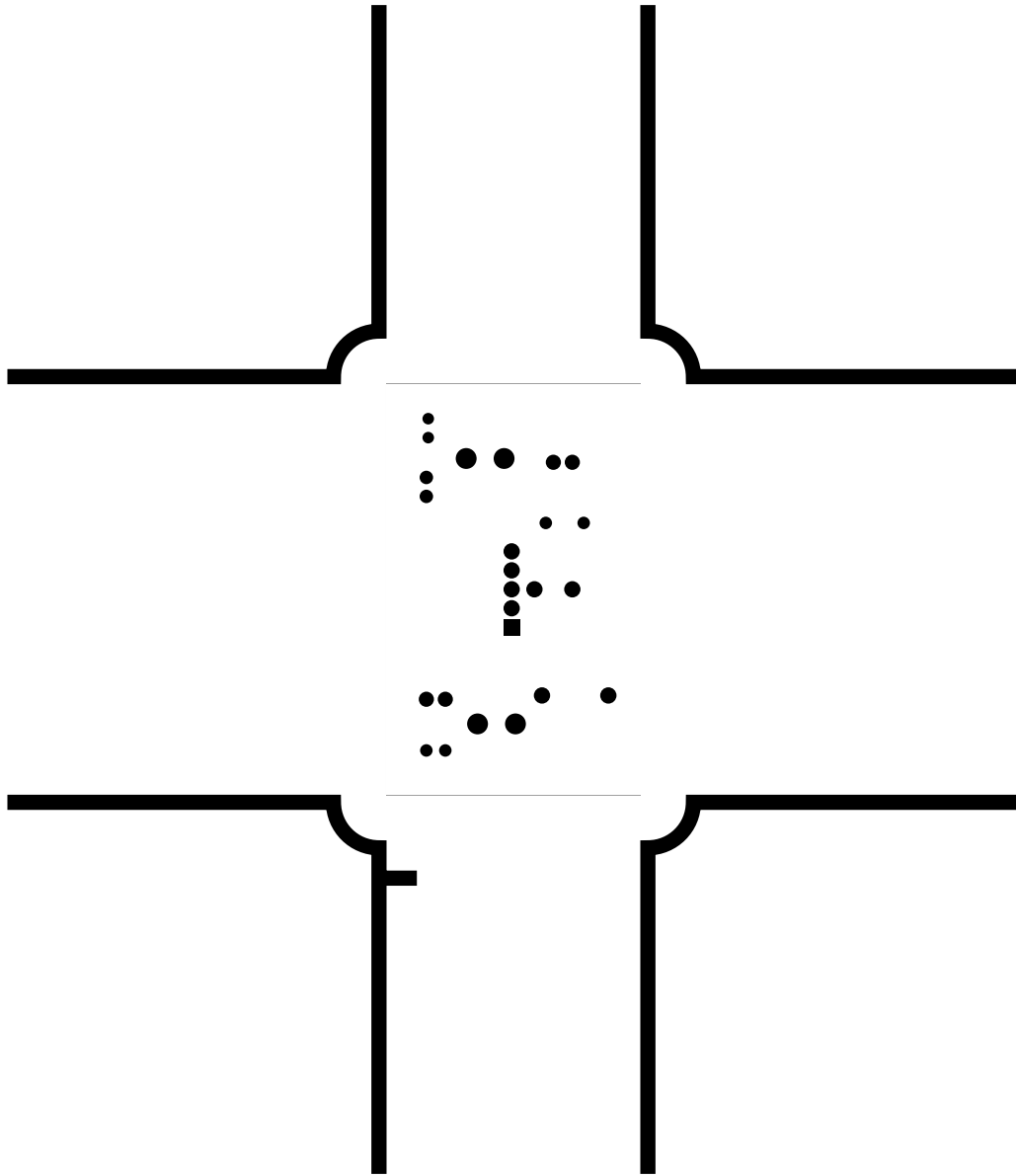
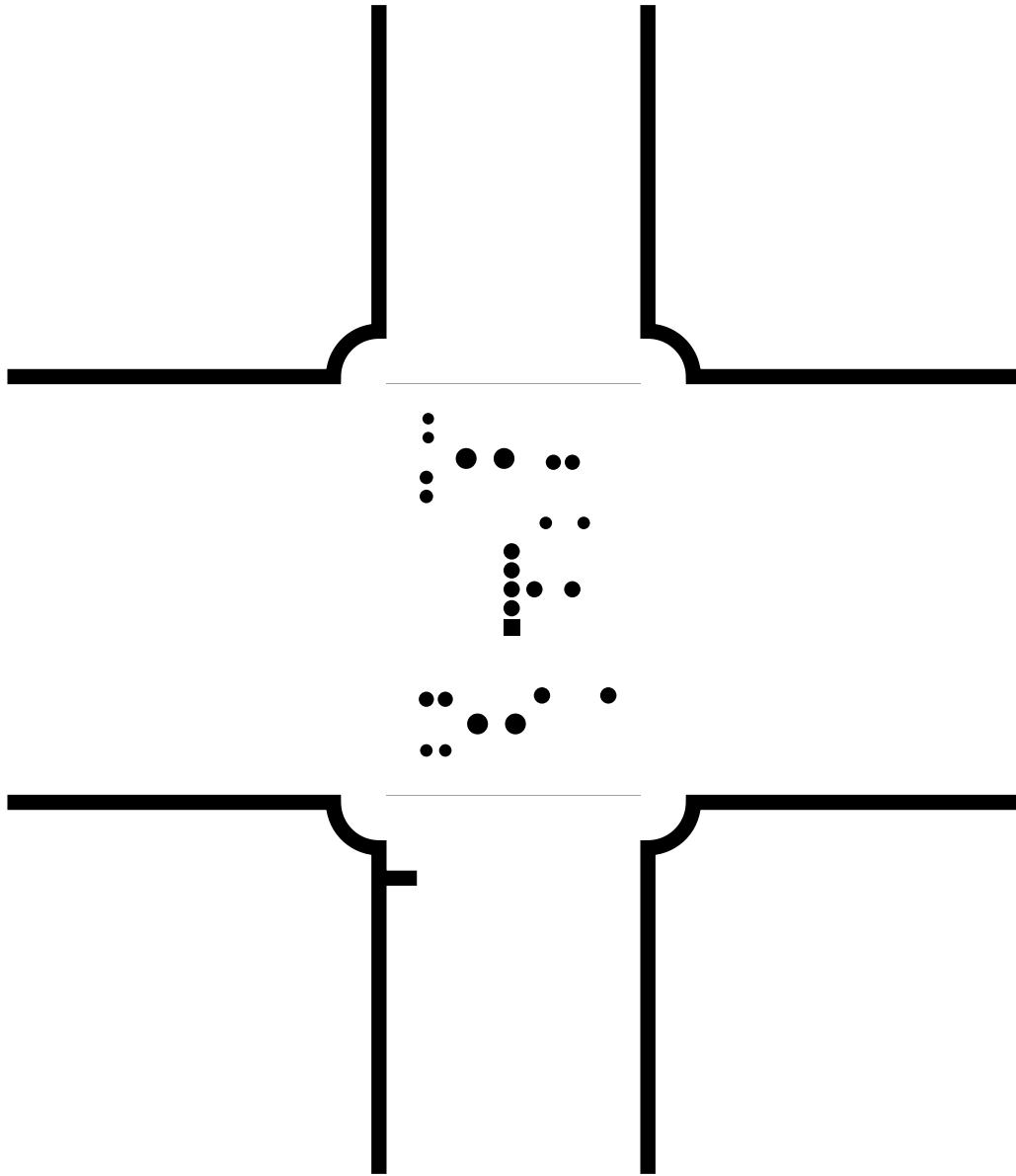


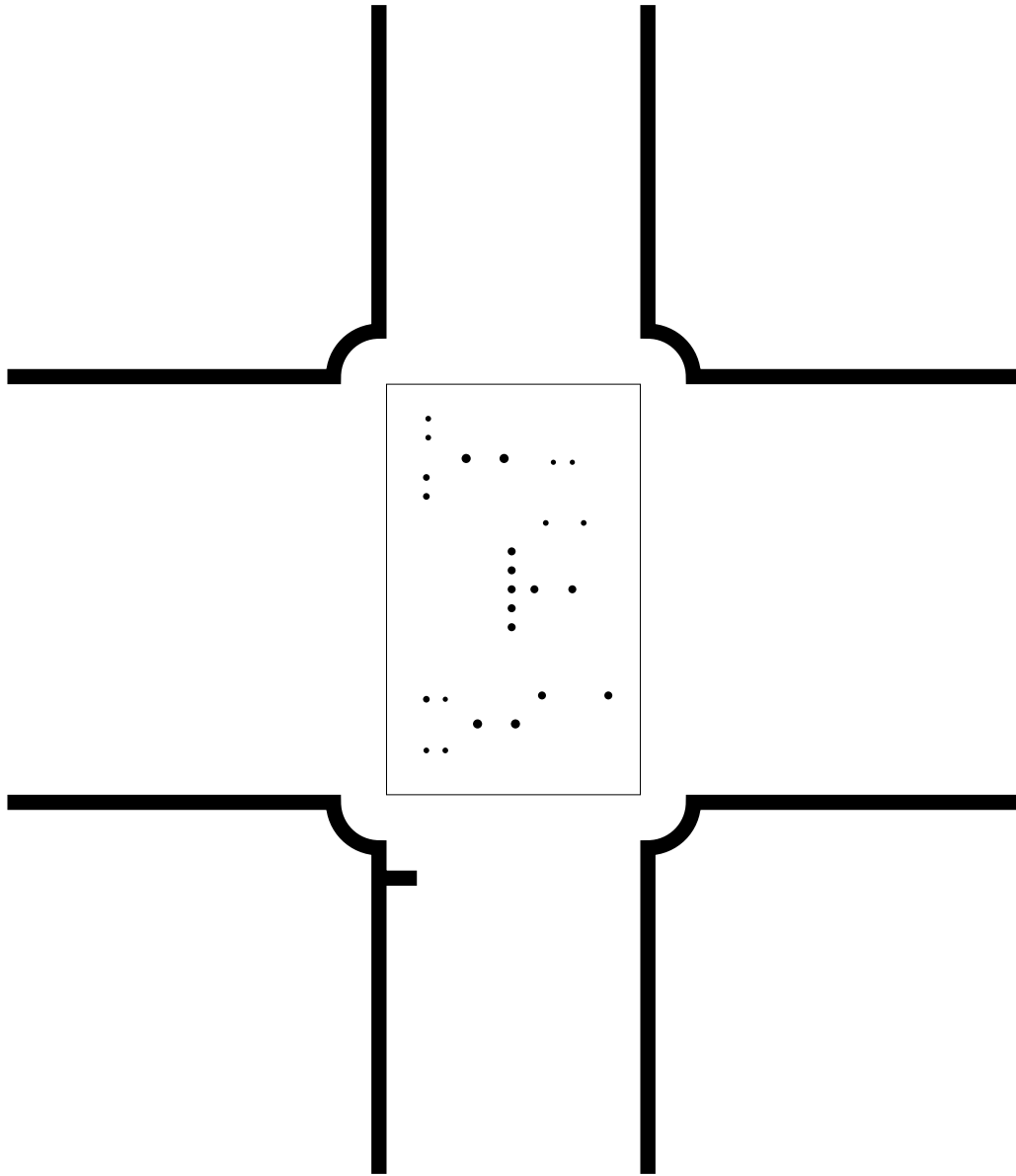
2. solder
3. component
4. componentmask
5. soldermask
6. plated-drill
7. topsilk
8. bottomsilk
9. topassembly
10. bottomassembly
11. fab

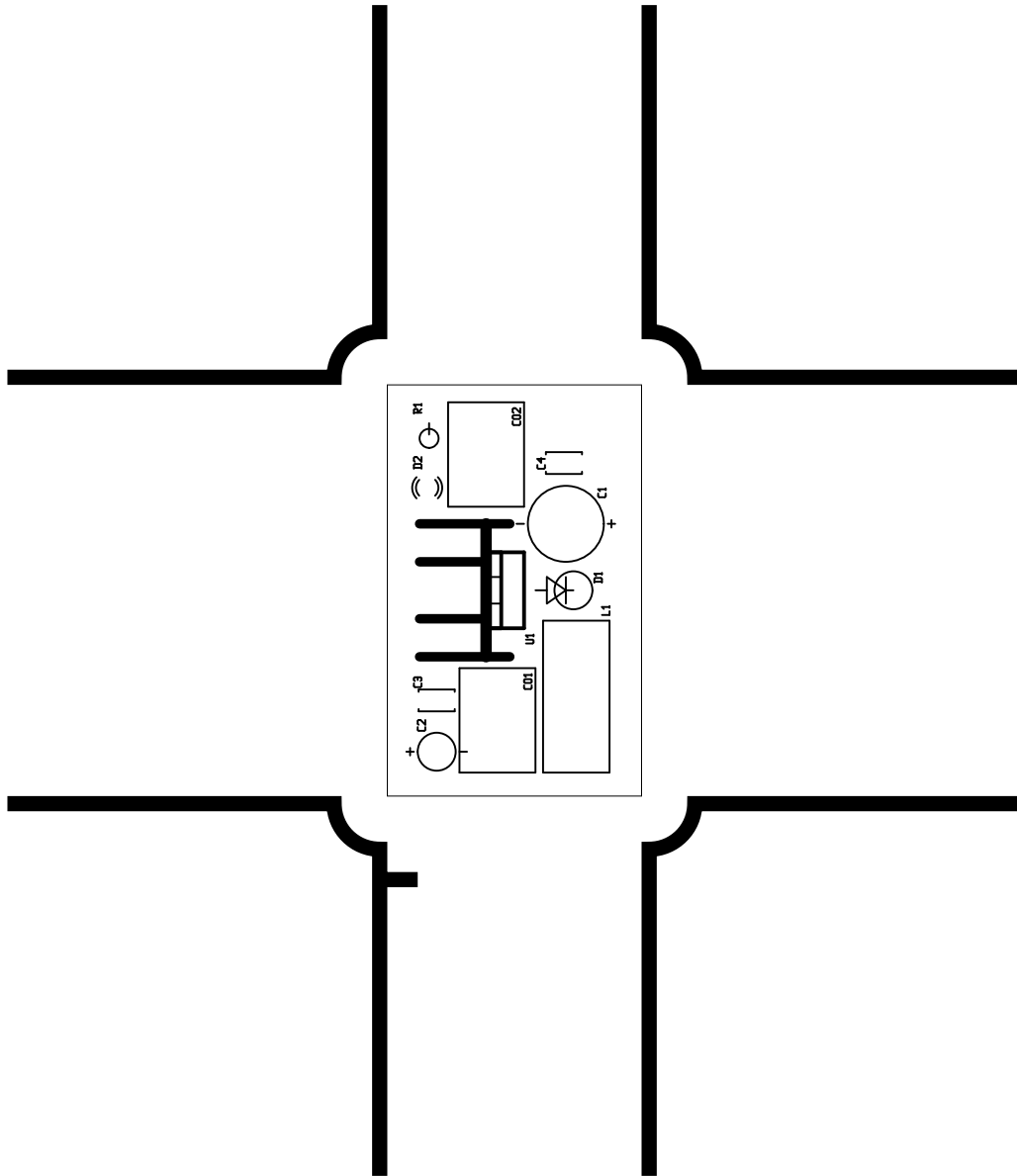


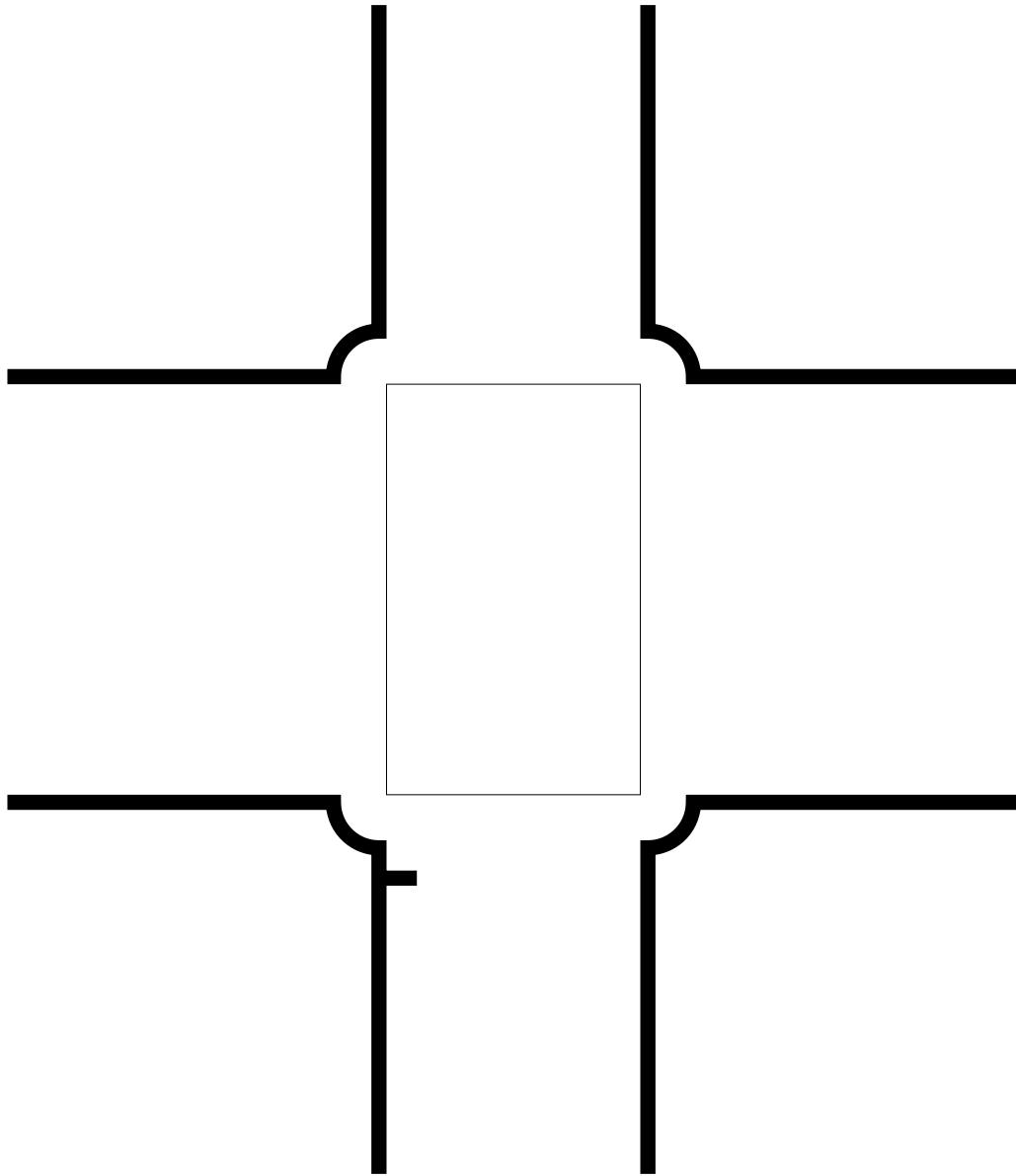


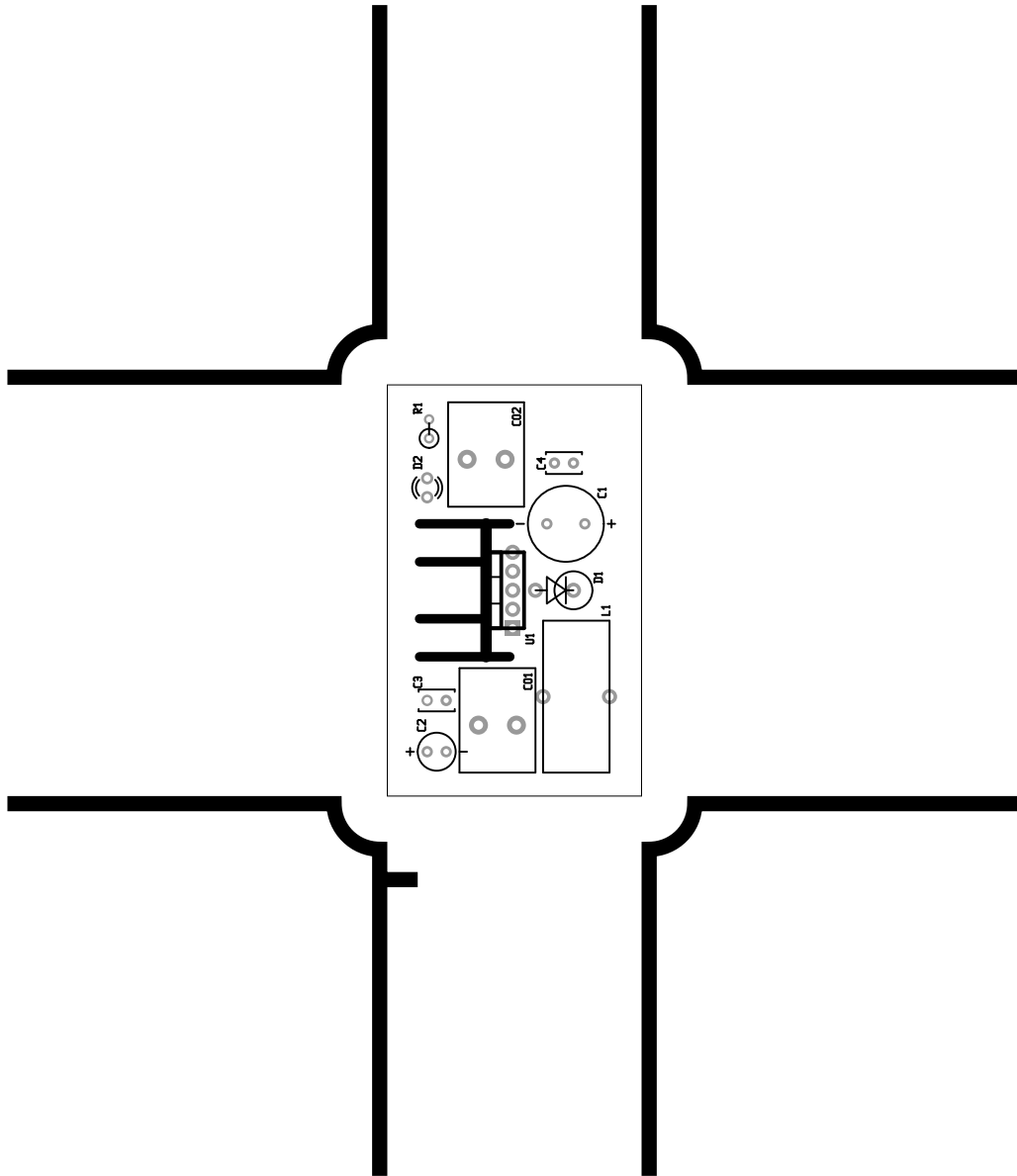


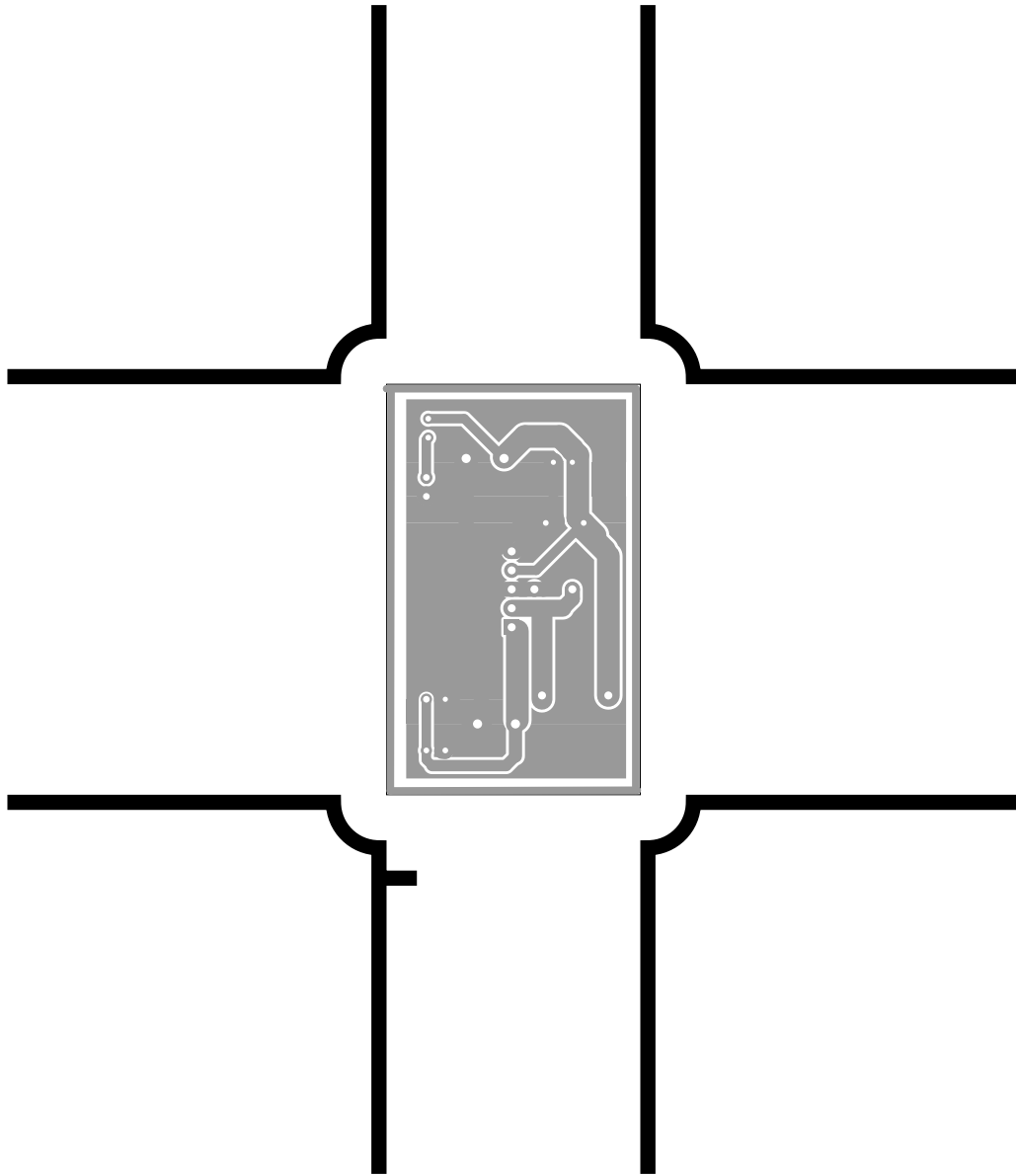






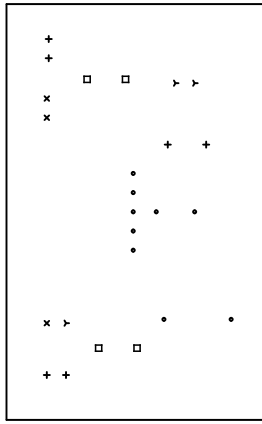






There are 5 different drill sizes used in this layout, 2 holes total

Symbol	Diam. (Inch)	Count	Plated?	Title	Author	Date	Maximum Dimensions
y	0.027	3	YES	(unknown) - Fabrication Drawing	FBddol	Jul 31 07:07:09 2008 UTC	2165.mils wide, 1338.mils high
+	0.030	6	YES				
x	0.035	3	YES				
.	0.042	9	YES				
□	0.049	4	YES				



Board outline is the centerline of this 10 mil rectangle - 0.010 x 0.010 mils