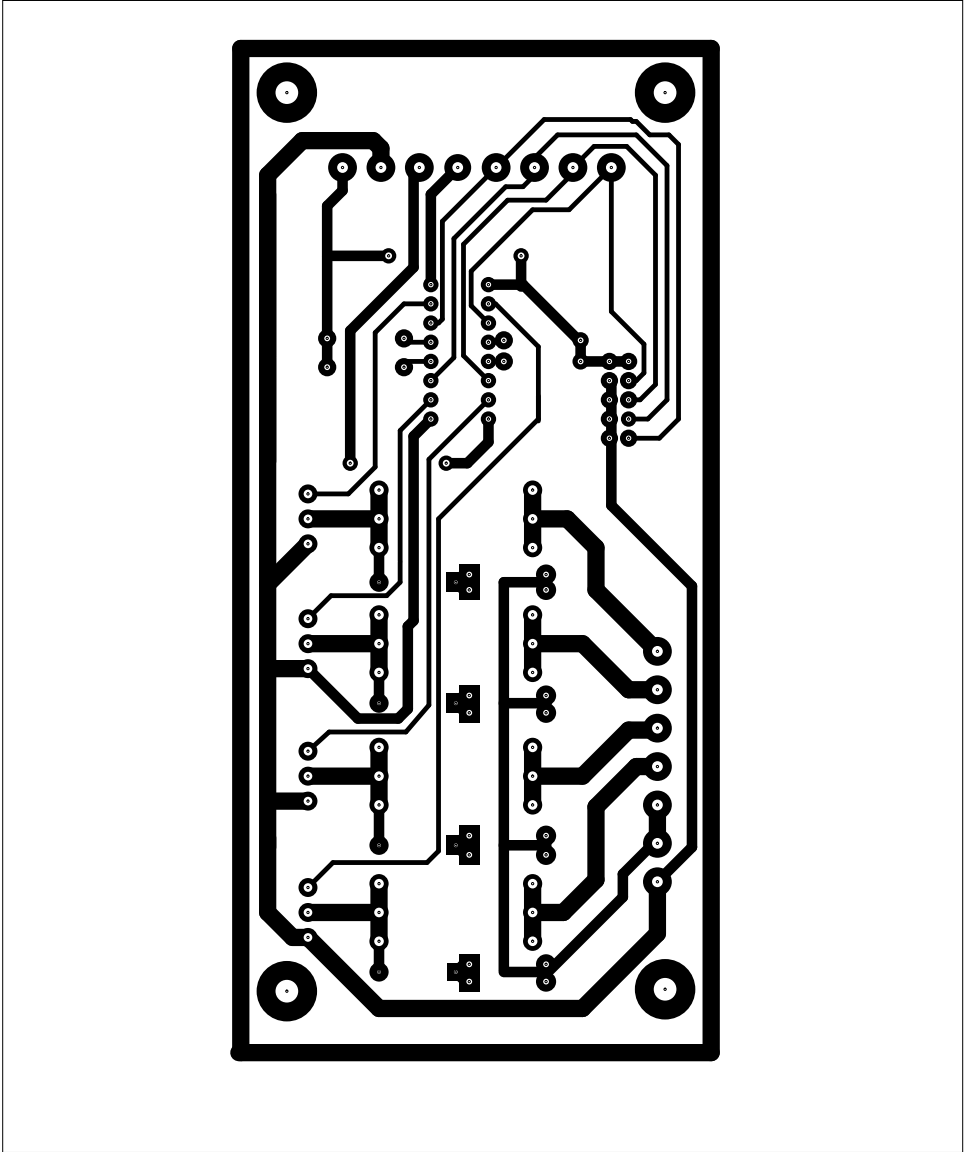
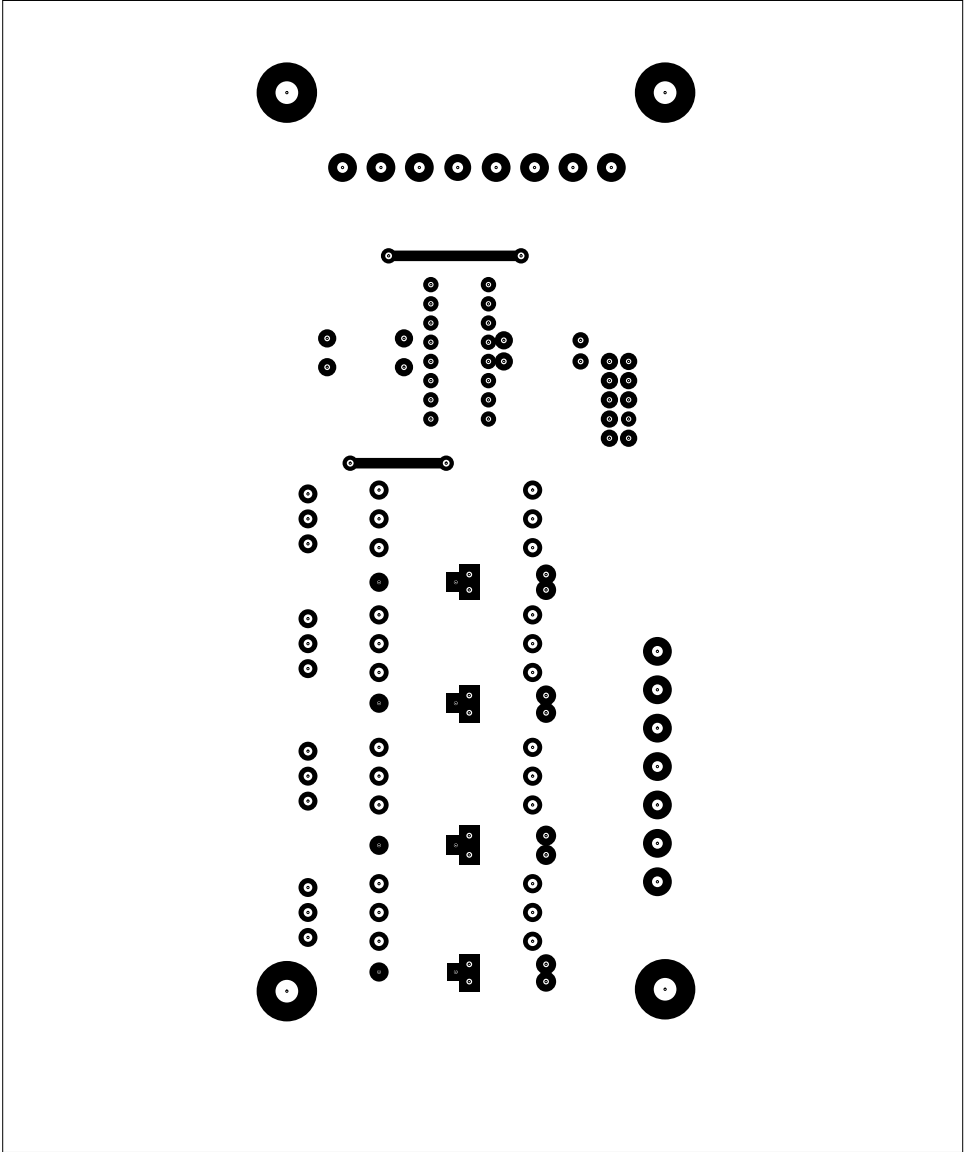
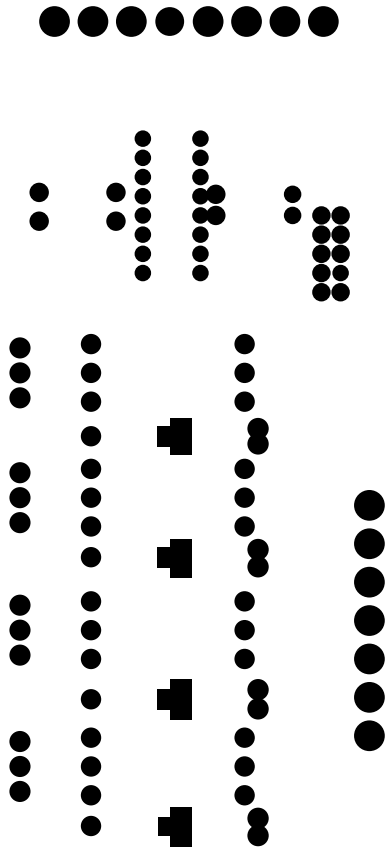
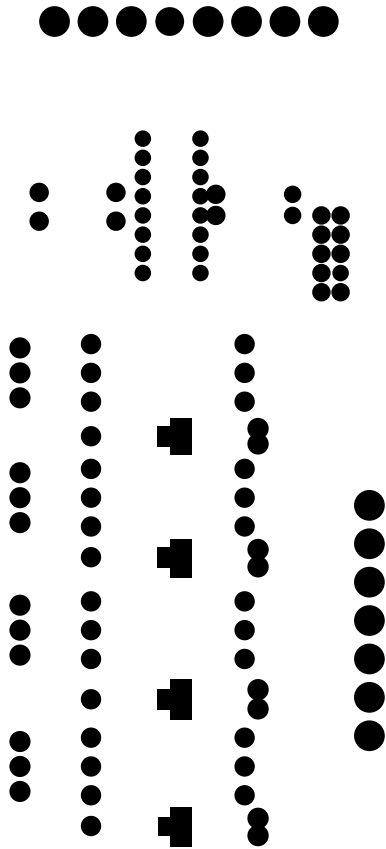


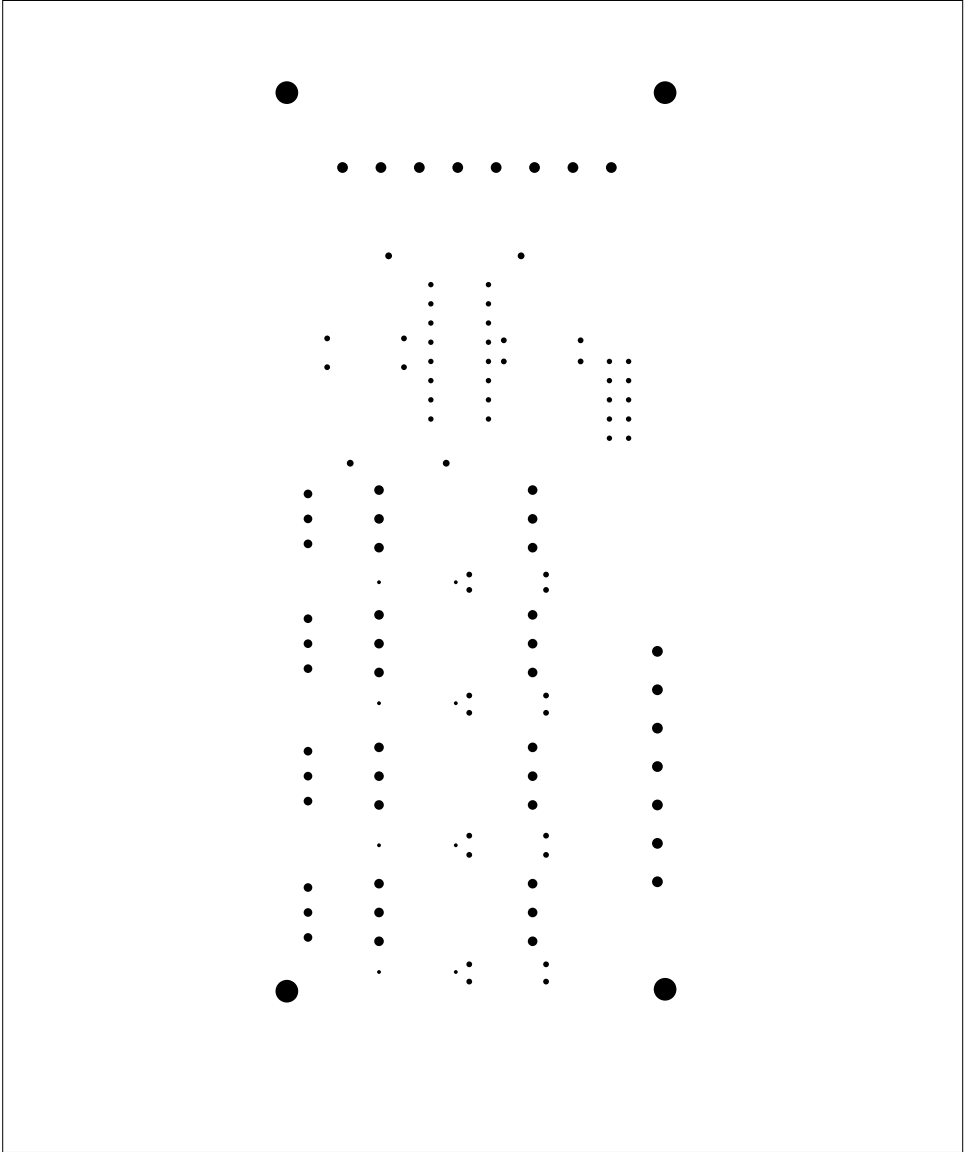
2. solder
3. component
4. componentmask
5. soldermask
6. plated-drill
7. topsilk
8. bottomsilk
9. topassembly
10. bottomassembly
11. fab

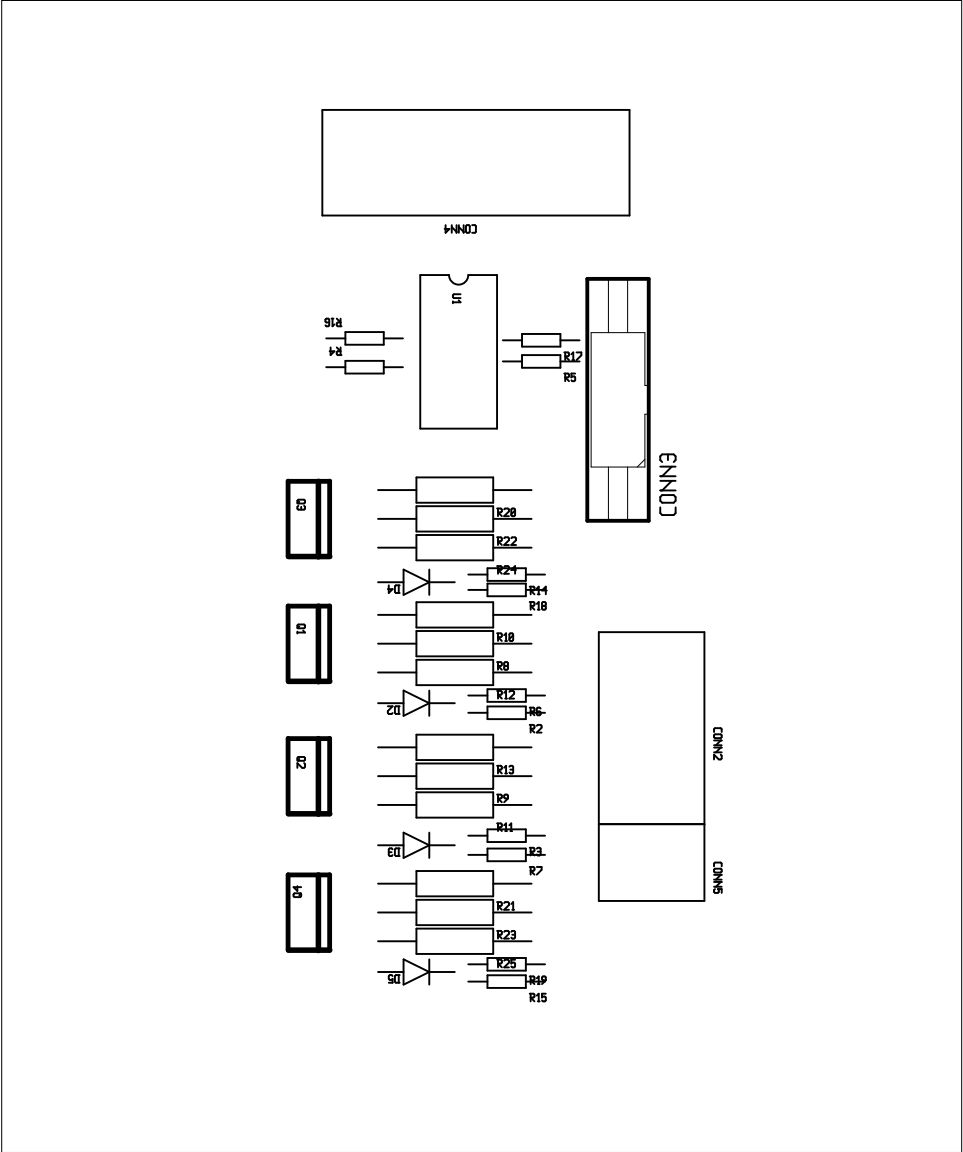


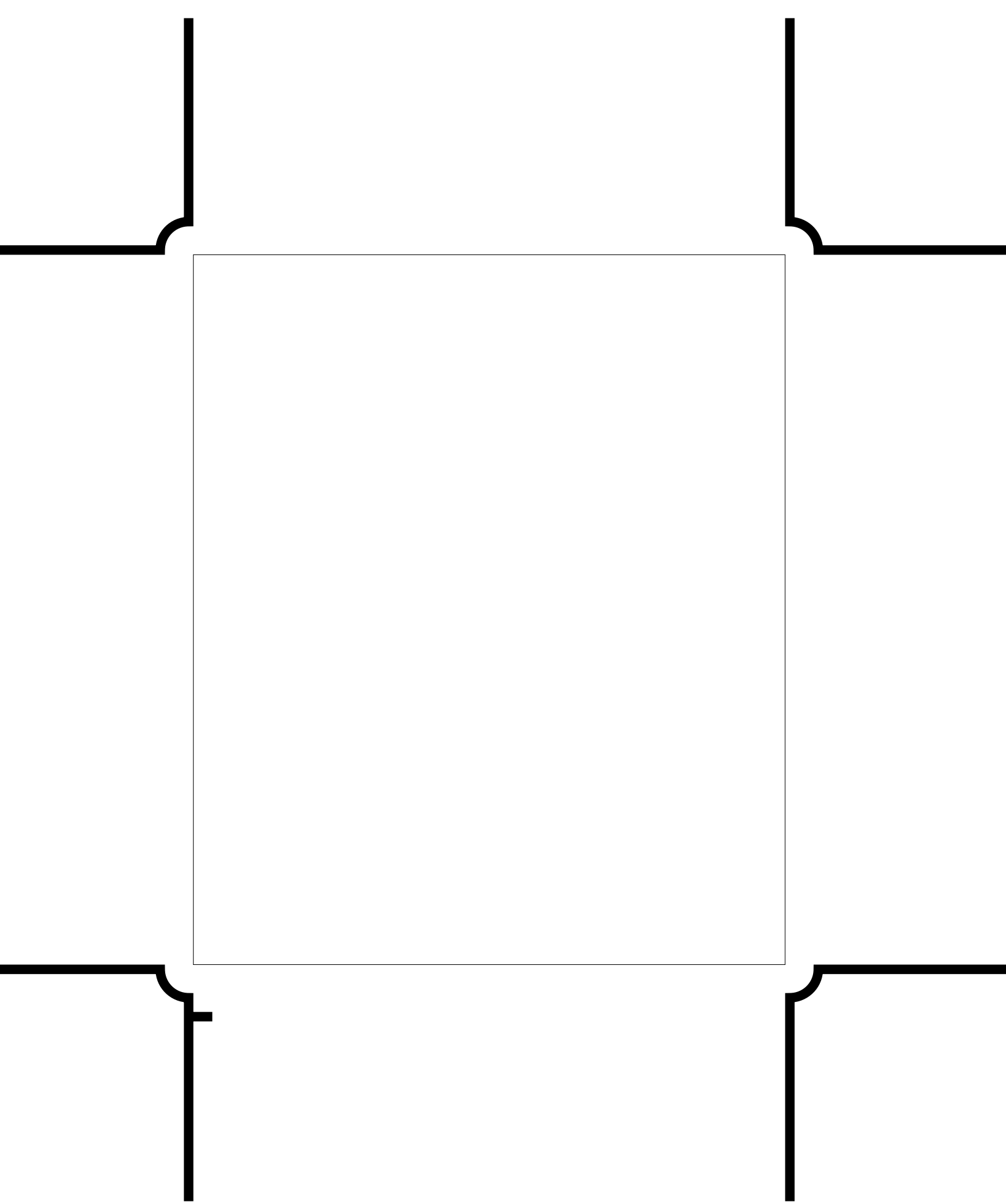




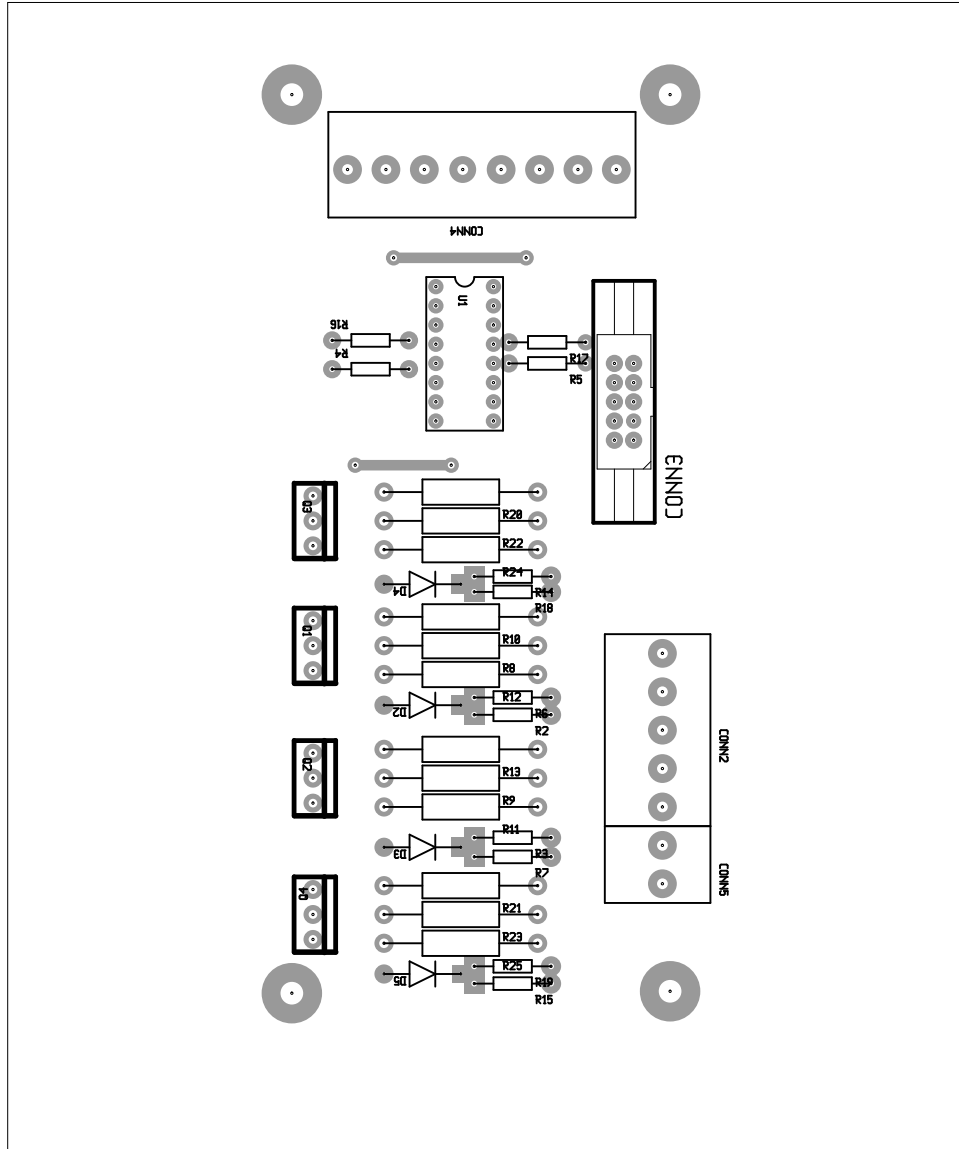


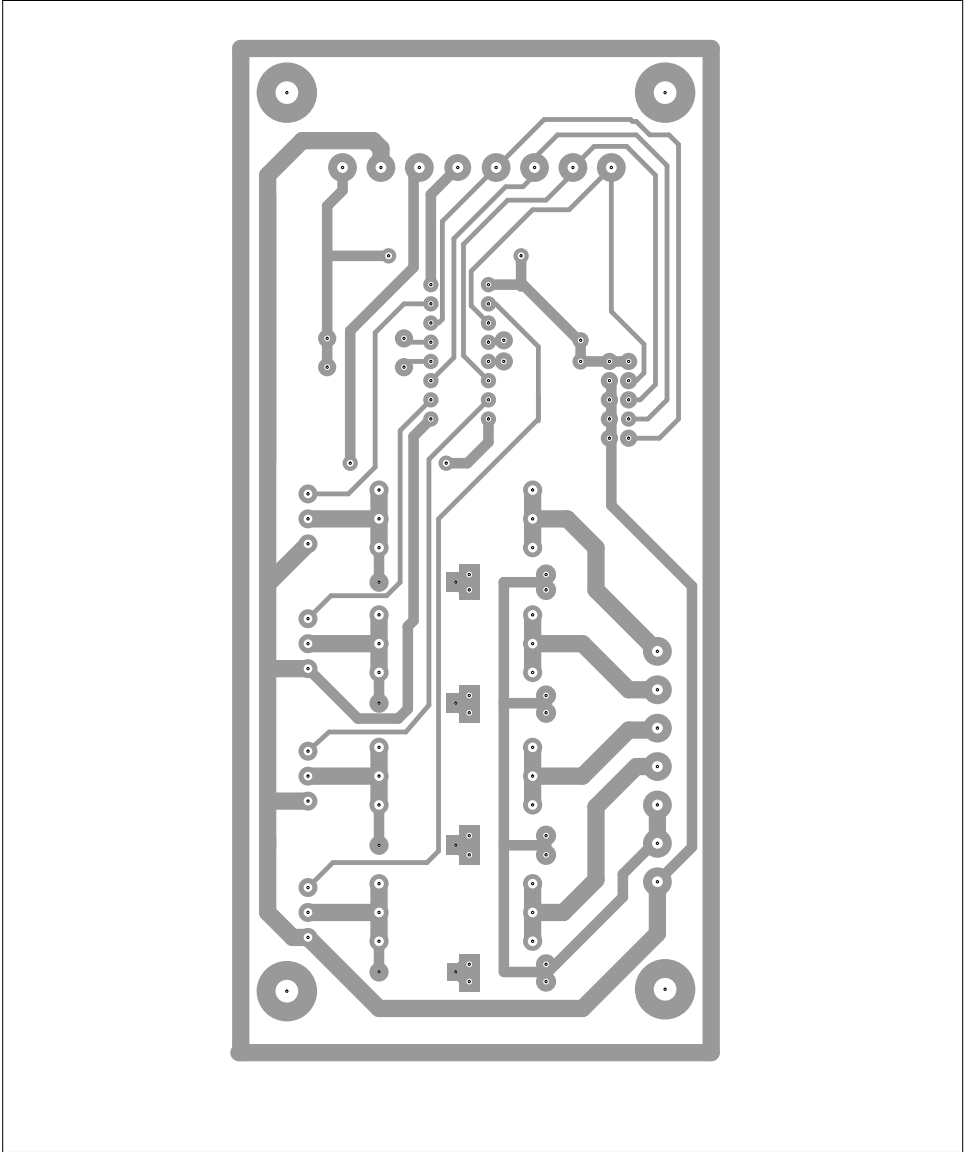






(null), backsilk, scale = 1:1.000  
smpd.pcb





There are 8 different drill sizes used in this layout, 117 holes total

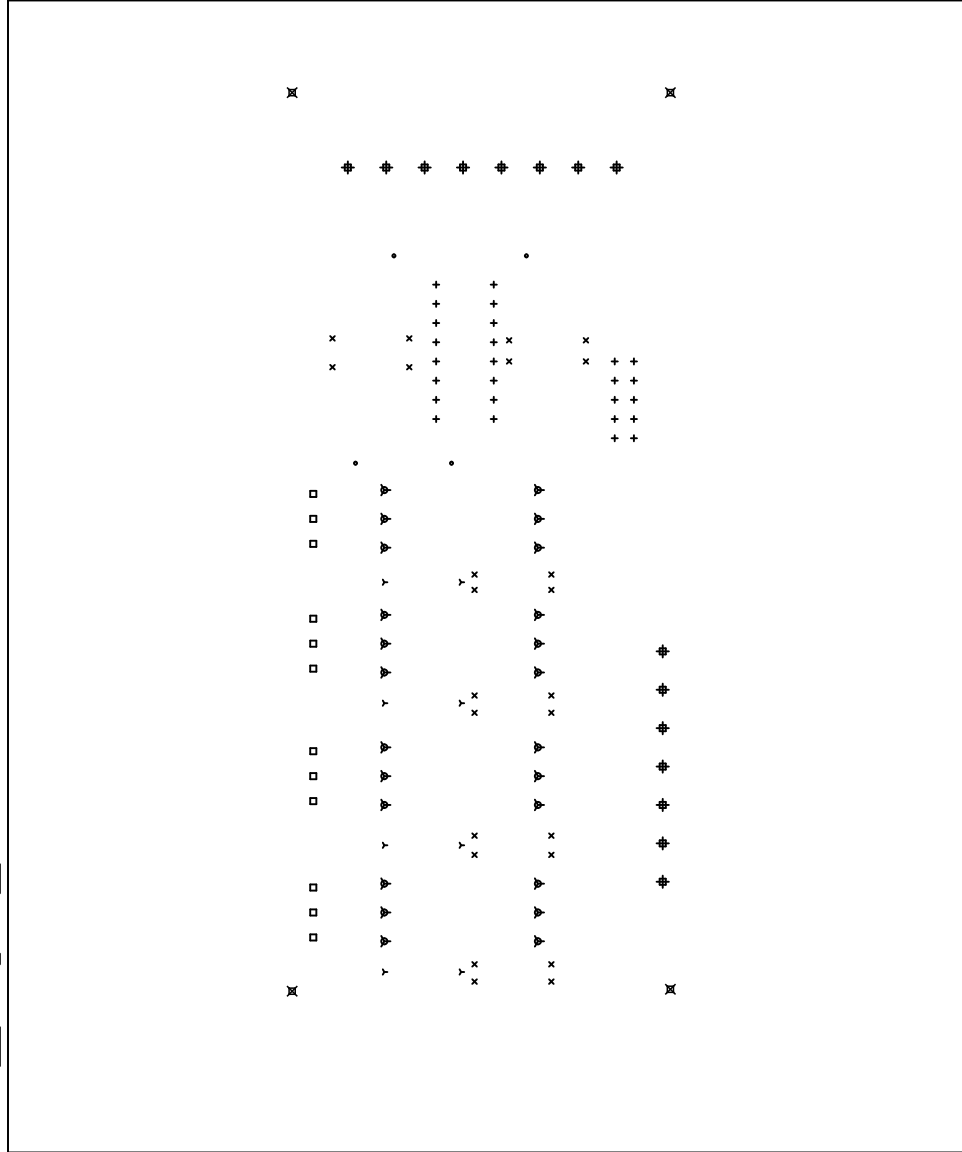
Symbol	Diam. (Inch)	Count	Plated?
Y	0.020	8	YES
+	0.028	26	YES
x	0.030	24	YES
.	0.035	4	YES
□	0.045	12	YES
▽	0.050	24	YES
⊕	0.056	15	YES
⊗	0.119	4	YES

Title: (Unknown) - Fabrication Drawing

Author: Rbdol

Date: Sun Mar 16 18:27:15 2008 UTC

Maximum Dimensions: 6000 mils wide, 5000 mils High



Board outline is the centerline of this 10 mil rectangle - 0.0 to 6000,5000 mils