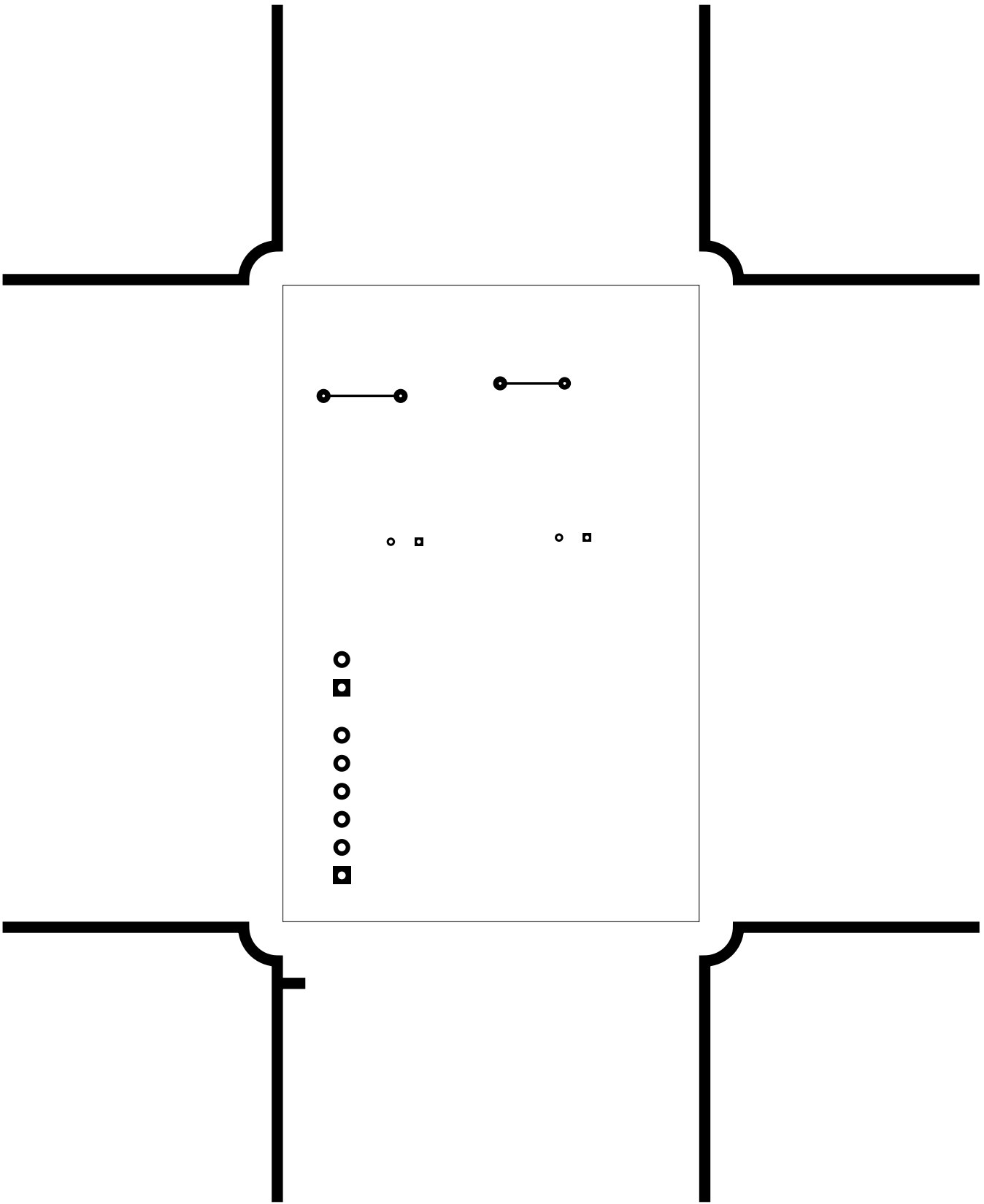
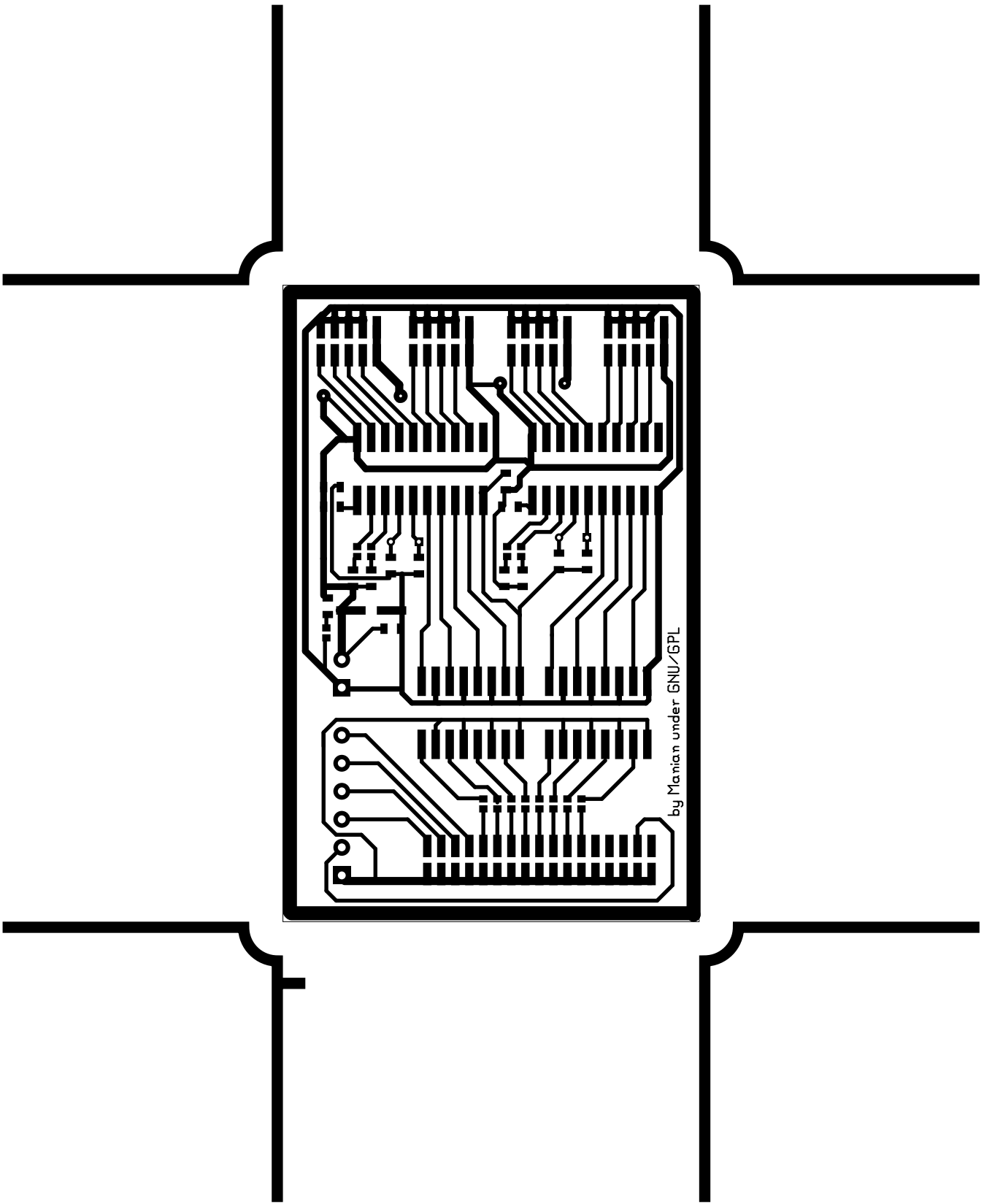
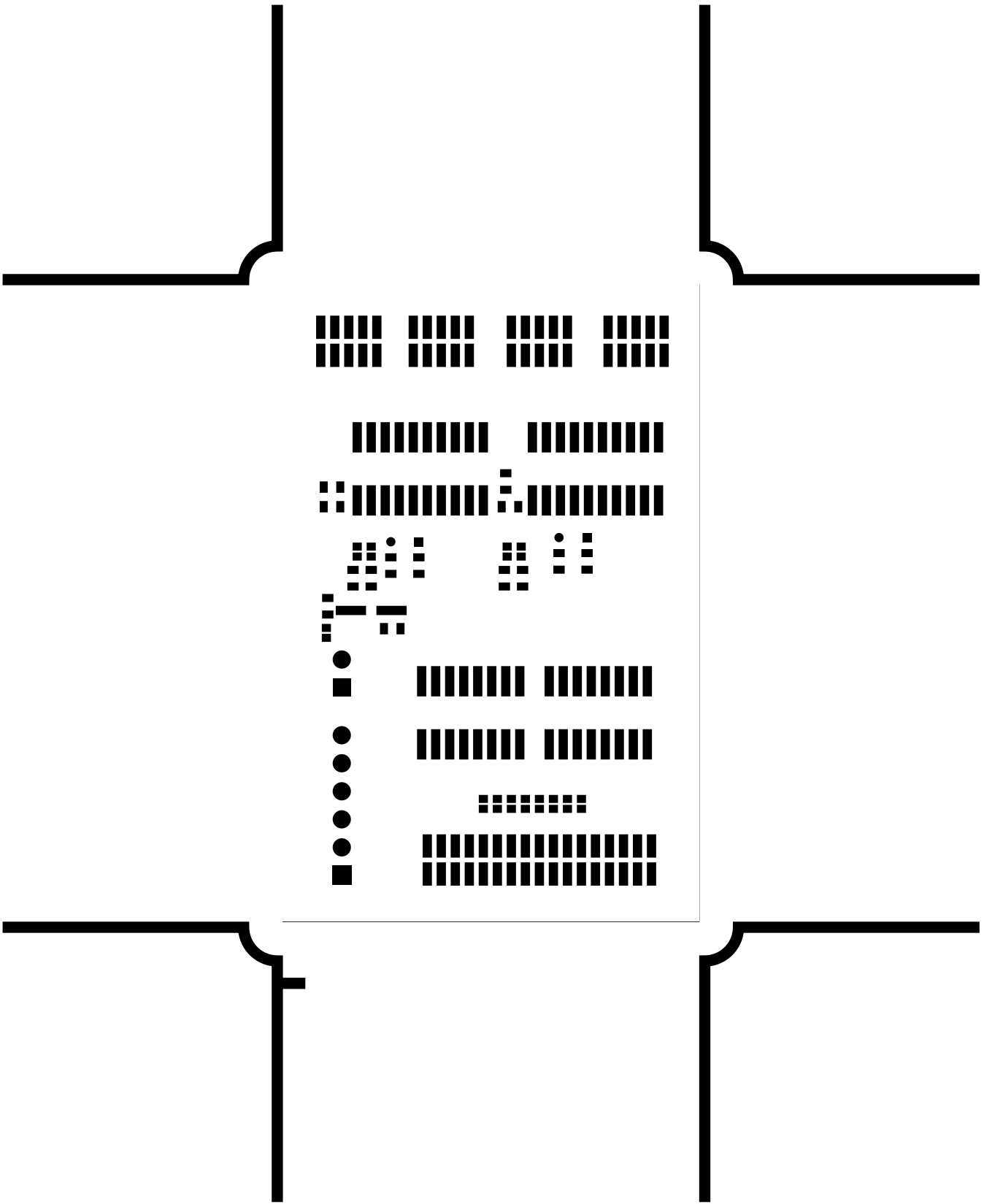
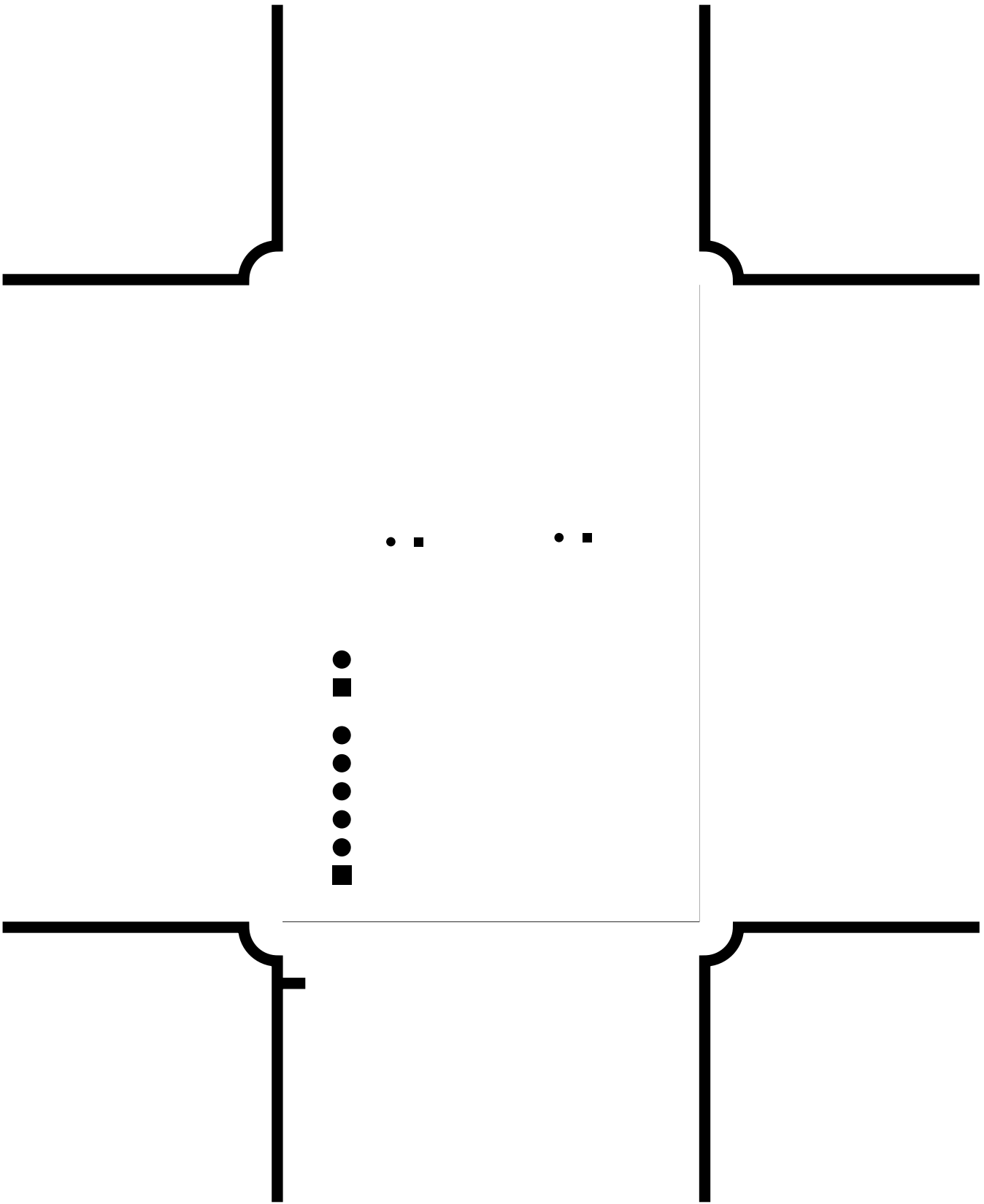


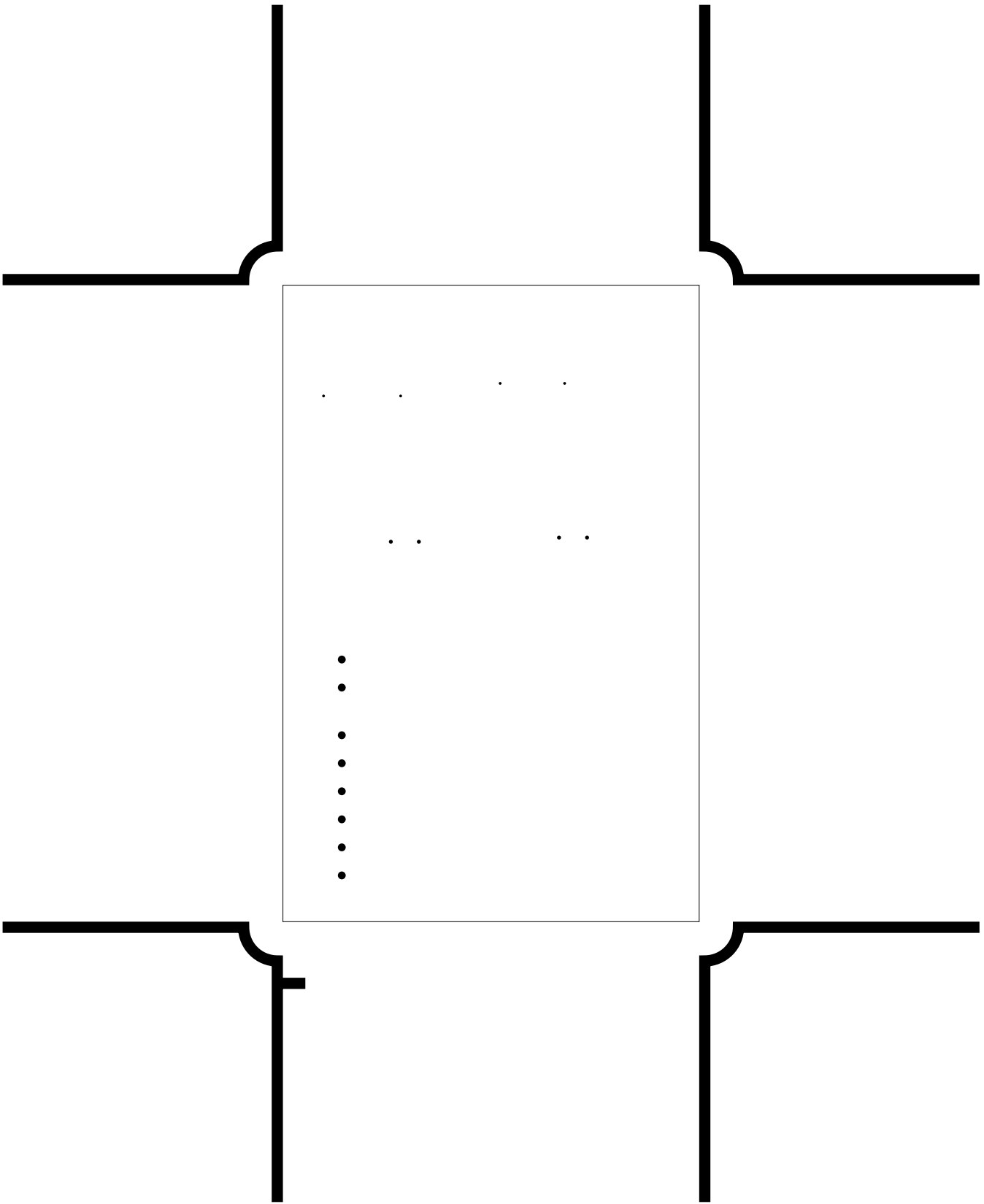
2. solder
3. component
4. componentmask
5. soldermask
6. plated-drill
7. topsilk
8. bottomsilk
9. toppaste
10. topassembly
11. bottomassembly
12. fab

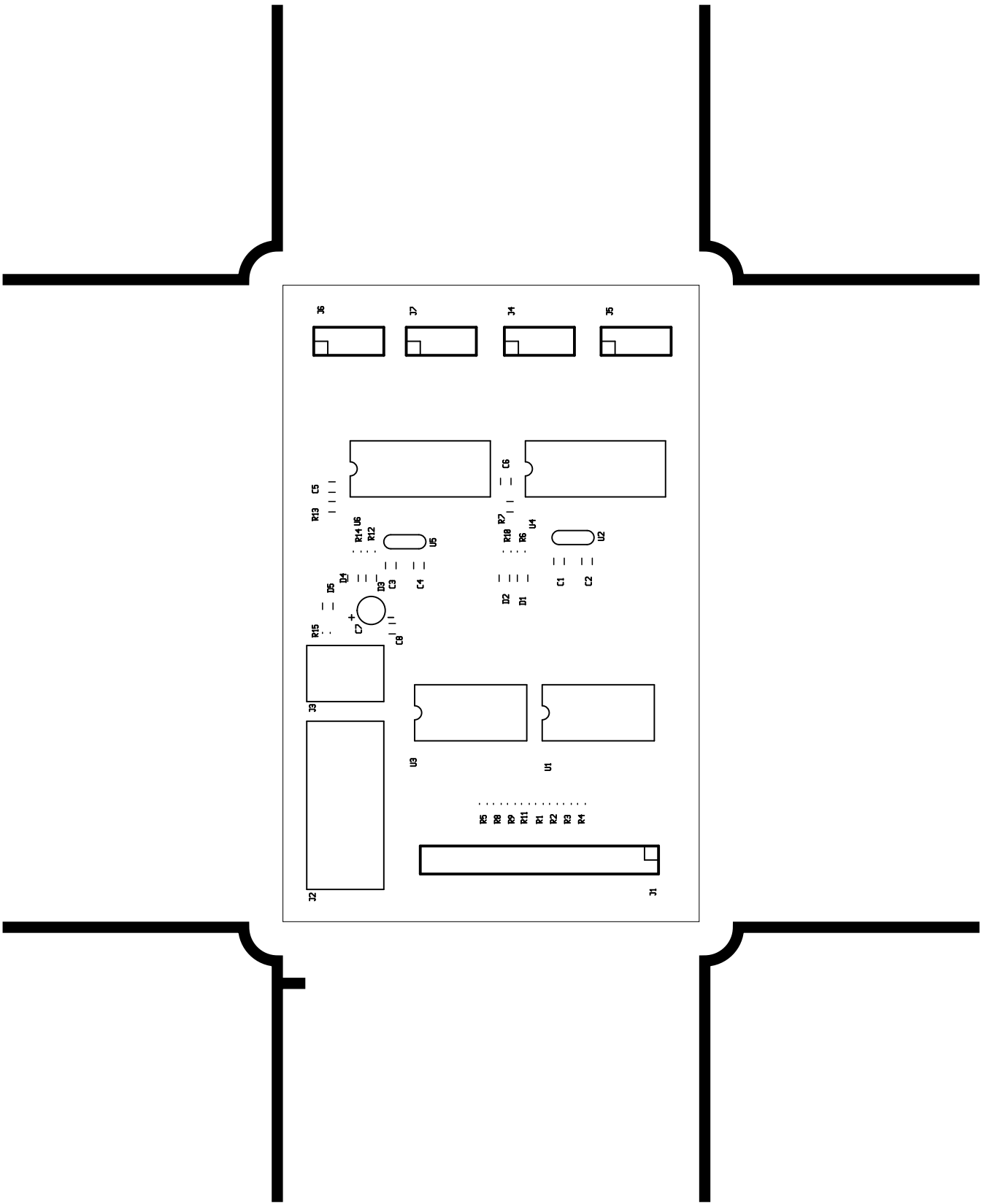


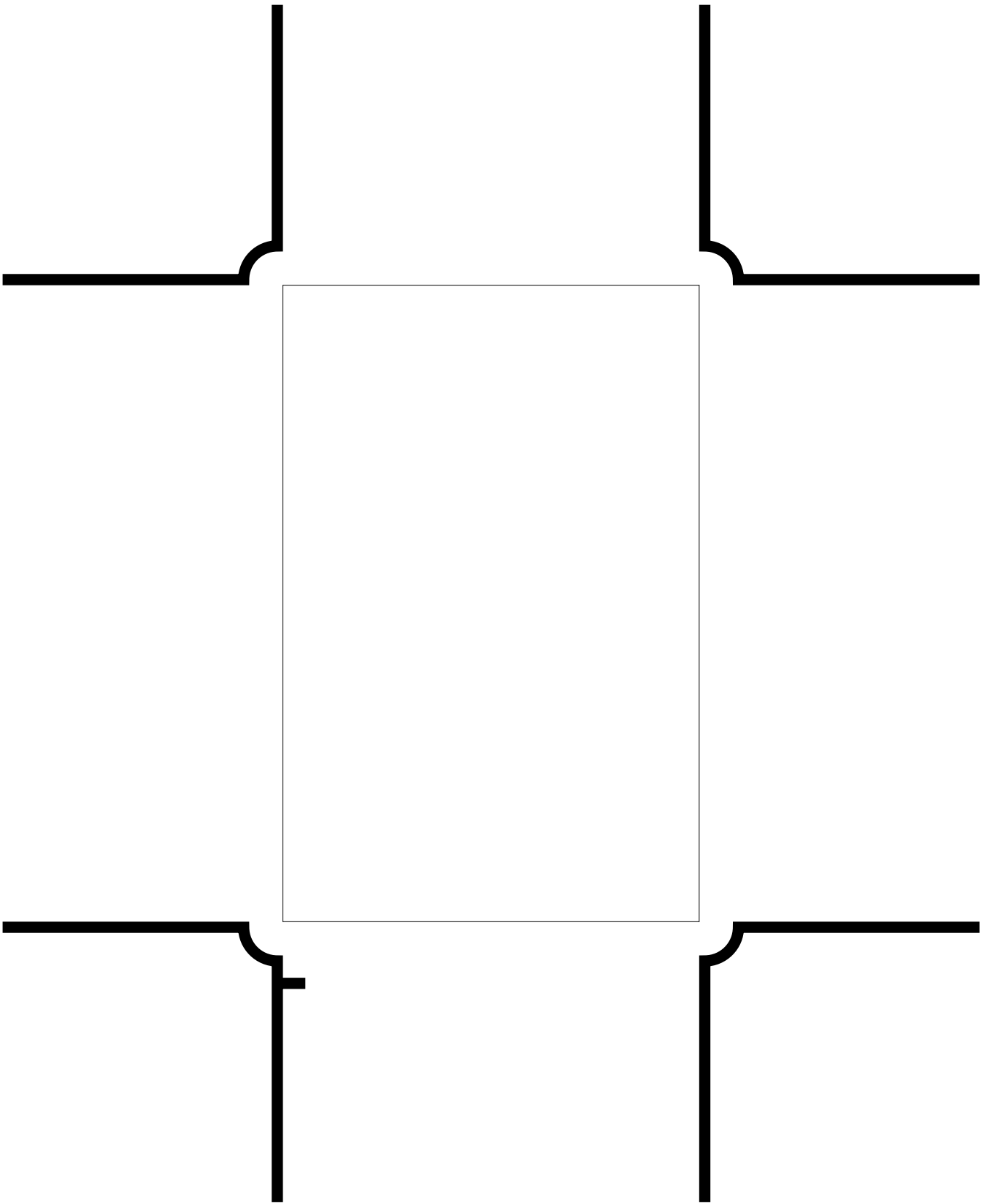


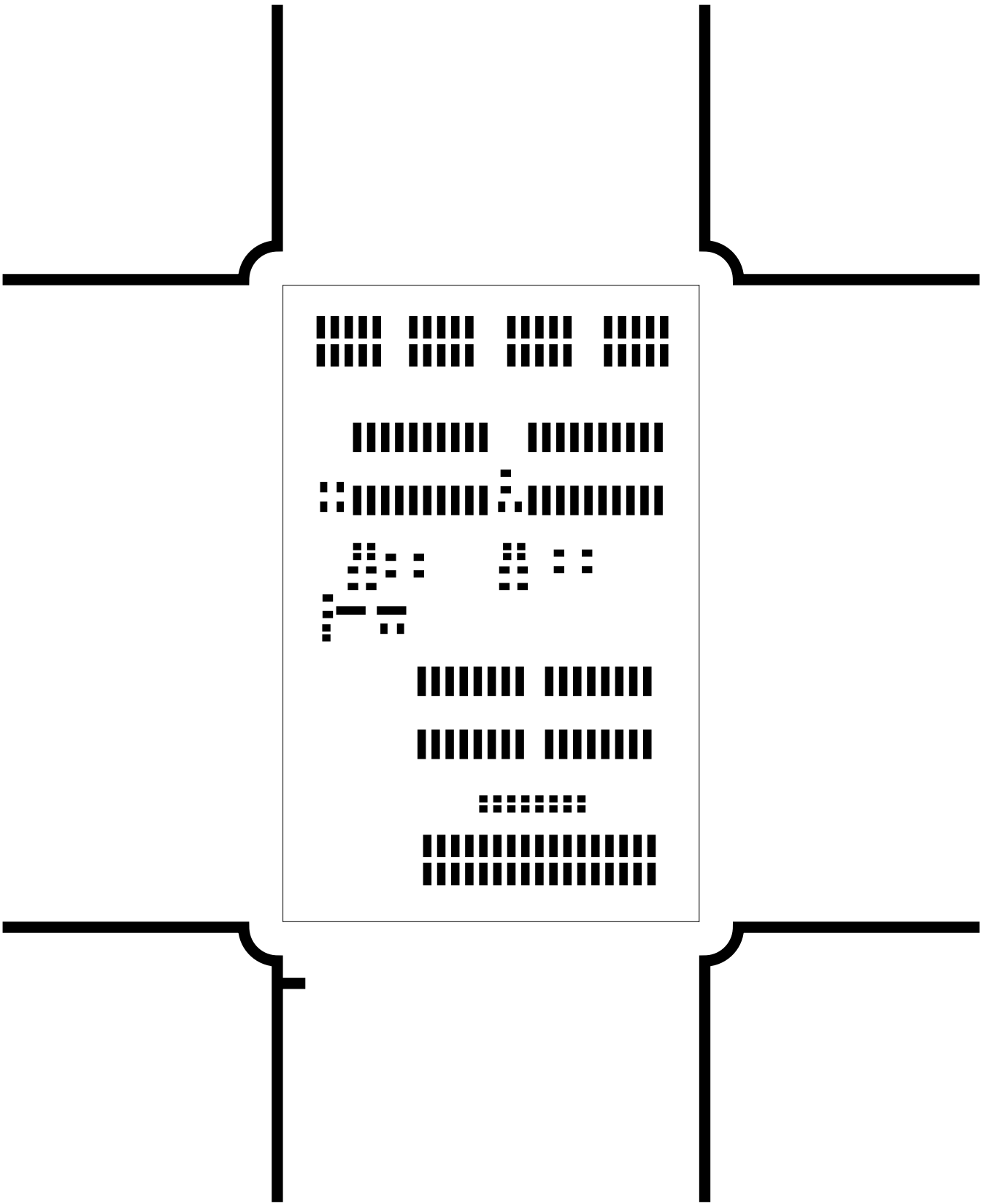


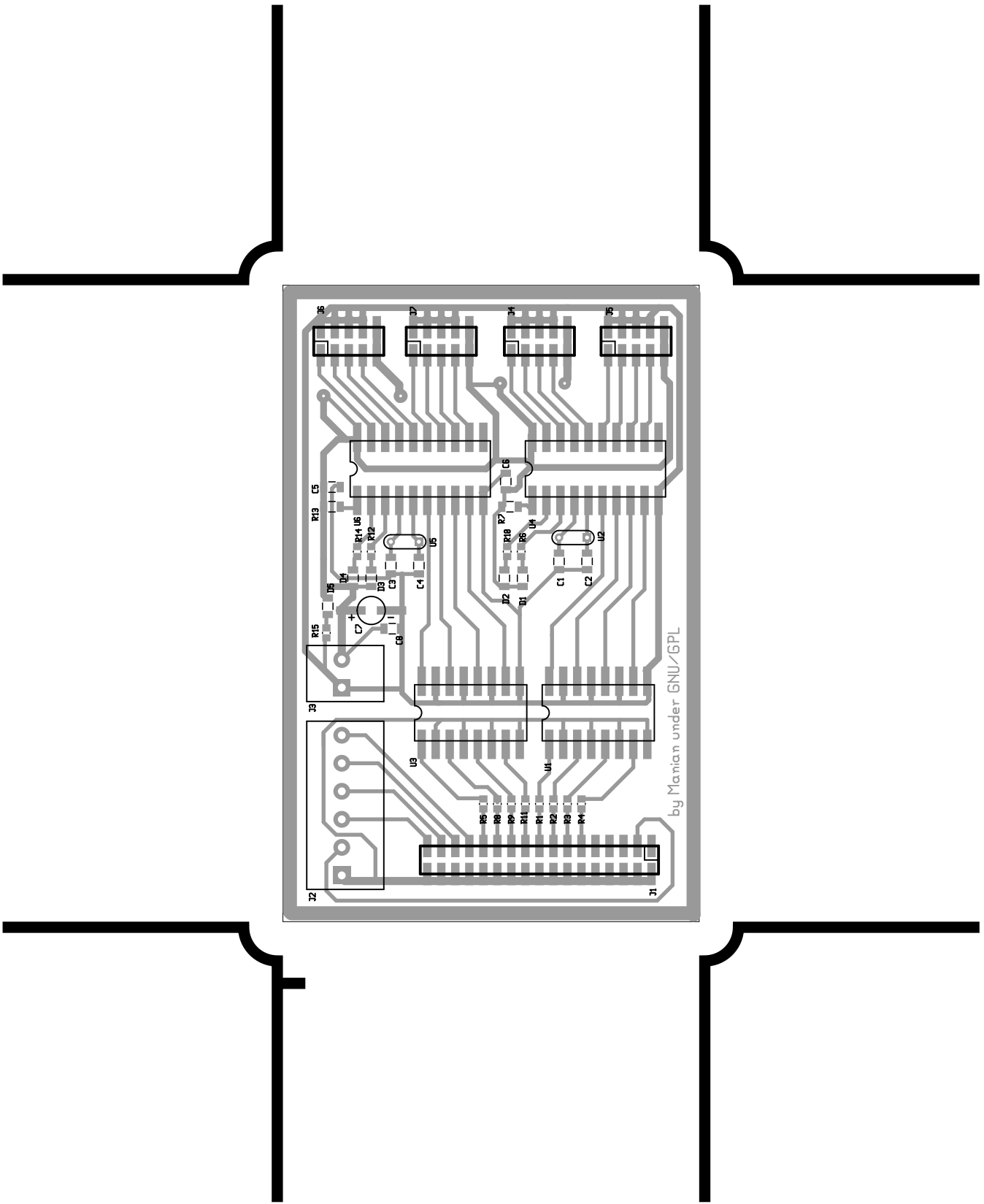


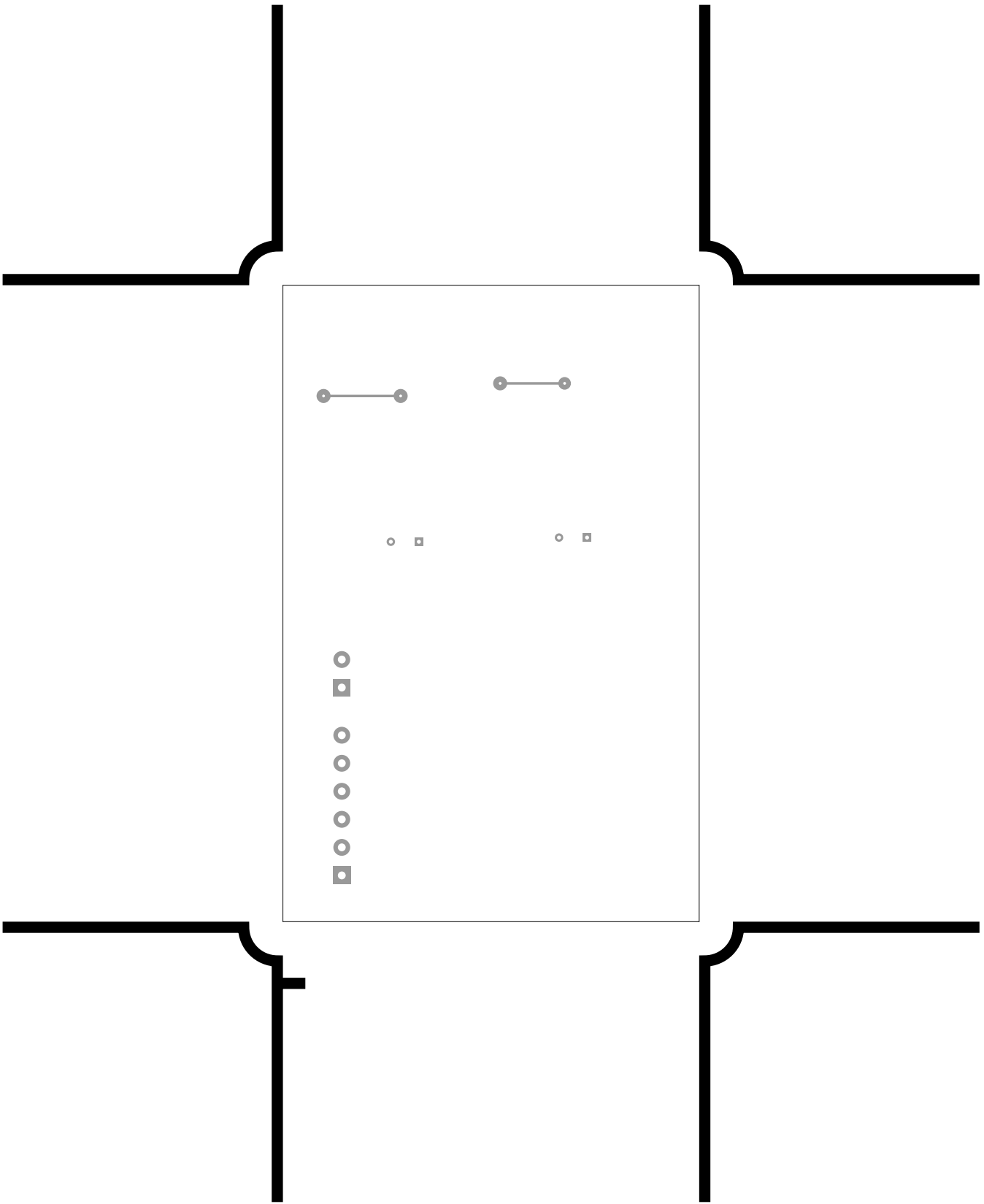






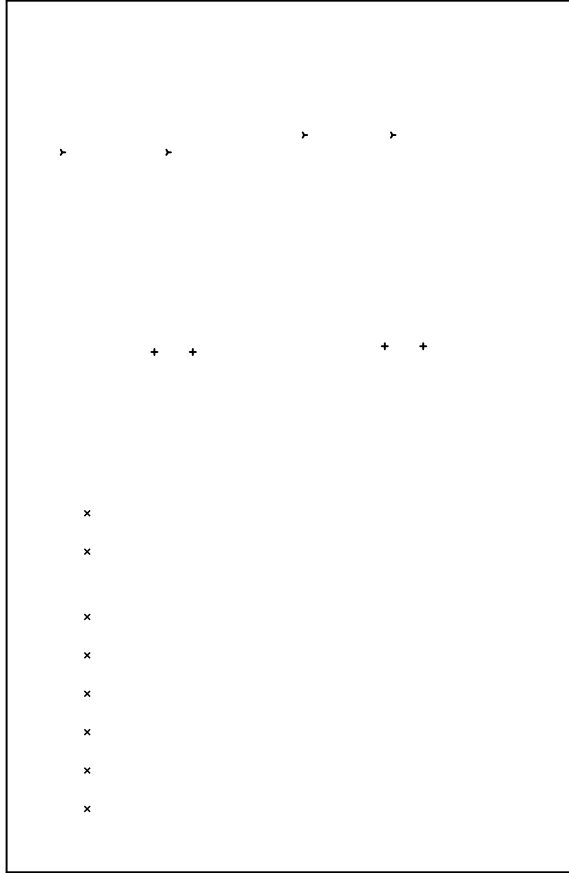






There are 3 different drill sizes used in this layout, 16 holes total

Symbol	Diam. (Inch)	Count	Plated?	Title: (unknown) - Fabrication Drawing
y	0.020	4	YES	Author: Rbddd
+	0.028	4	YES	Date: Mon Aug 18 14:36:56 2008 UTC
x	0.056	8	YES	Maximum Dimensions: 4548 mils wide, 2970 mils high



Board outline is the centerline of this 10 mil rectangle - 0.0 to 4548, 2970 mils